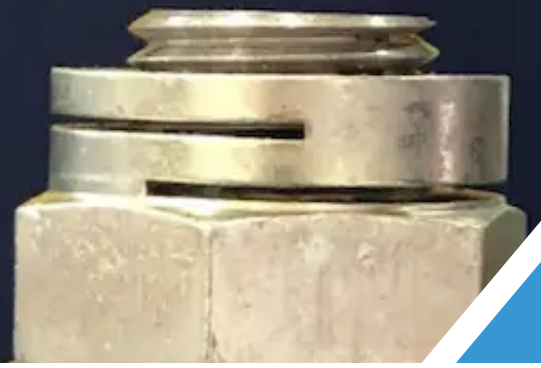




Product Catalogue

Available in Imperial and Metric



THE WORLD'S BEST LOCKNUT



- Most versatile
- Dual locking slot
- M1.2 to M60 / #4 to 2"1/2

ESL



- Integrated spring washer
- Quicker and easier to install
- M4 to M22 / #10 to 7/8"

ERM



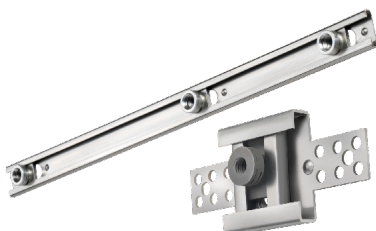
- Heavy hex industrial version of ESL
- Full height
- M4 to M60 / #3/4" to 2"1/2

THU



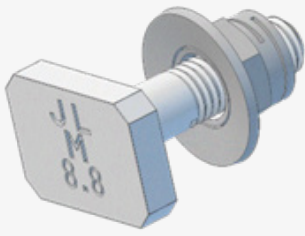
- Low profile for confined spaces
- M4 to M45 / 5/16" to 2" 1/2

THM



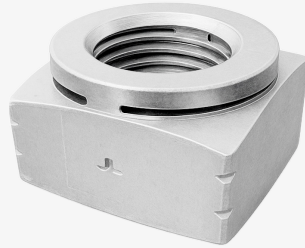
- Highly Adjustable
- Incorporate our locknuts into completely customizable channels
- Made to order C-channels

**MODULAR
FIXTURES**



T-BOLT

Made To Order



THS

Square Lock-nut



HMP

Nylon Insert
ISO 10511



HUP

Nylon Insert
High Temp
ISO 7040



GSL

Metric thread
deformation
ISO 7042



HCB

Jam Nut
H = 0.8 x D



HCE

Jam Nut
H = 1 x D



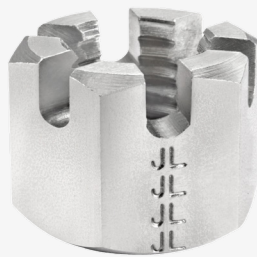
HCT

Jam Nut
H = 1.3 x D



HKD

Castle Nut



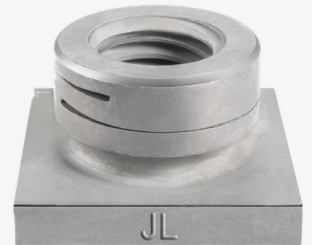
HKN

Castle Nut



ESF

Single-Slotted
Clinch Nut



ESQF

C-Channel
Lock-Nut